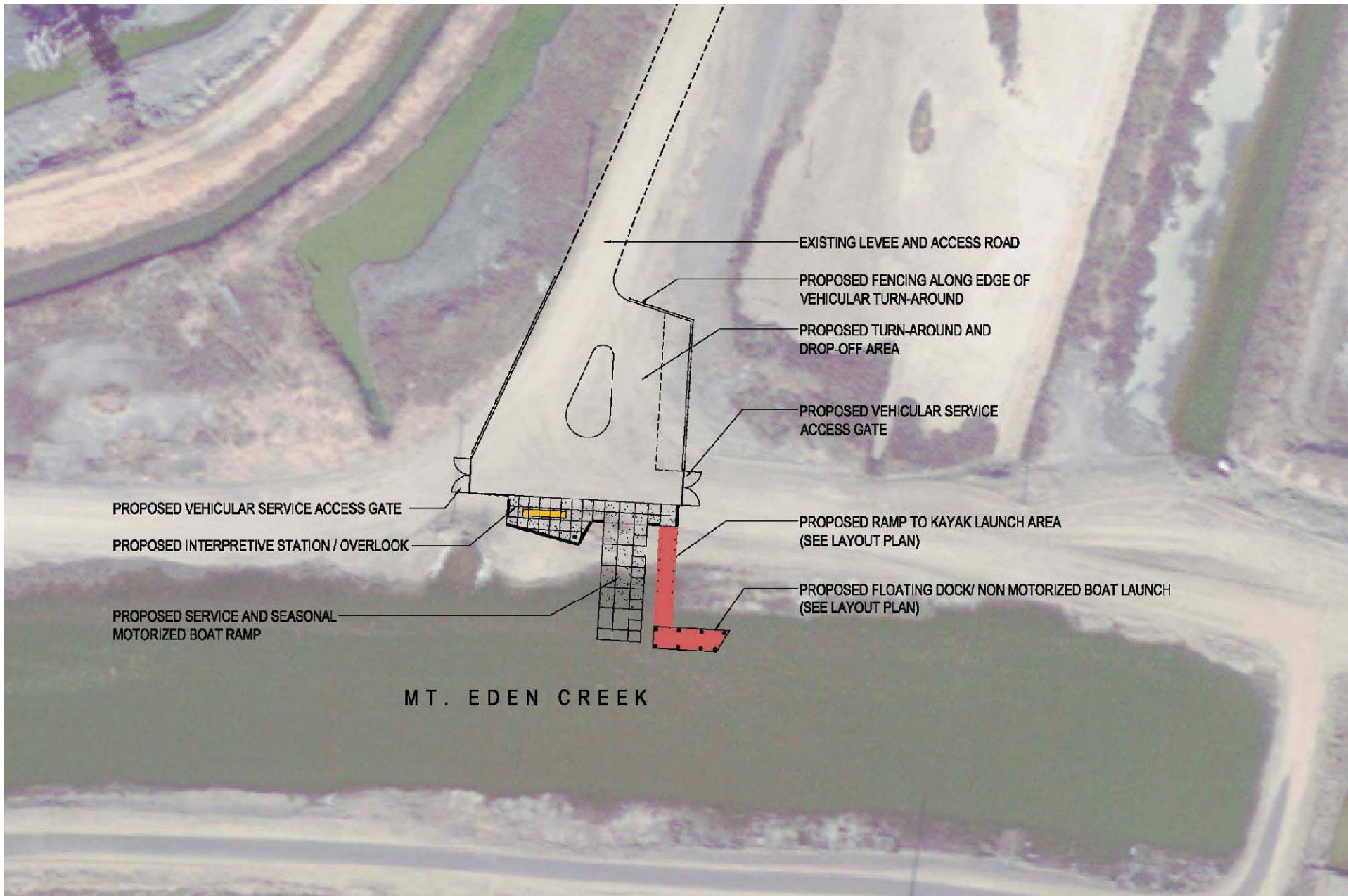


**S BSP Eden Landing Working Group Public Access Handouts, February 28, 2008**

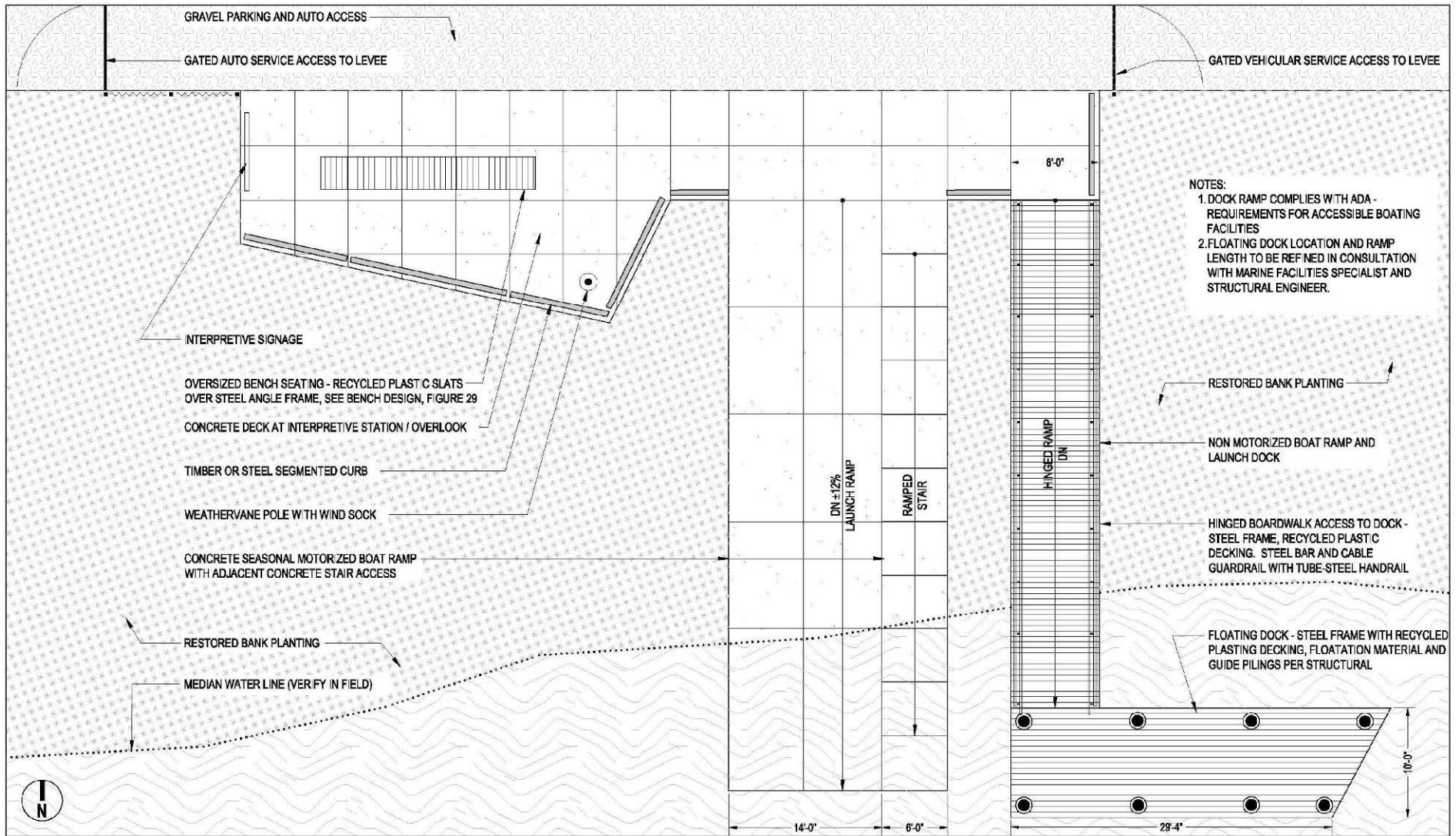








## DFG Site 1 – Kayak Launch



- NOTES:
1. DOCK RAMP COMPLIES WITH ADA - REQUIREMENTS FOR ACCESSIBLE BOATING FACILITIES
  2. FLOATING DOCK LOCATION AND RAMP LENGTH TO BE REFINED IN CONSULTATION WITH MARINE FACILITIES SPECIALIST AND STRUCTURAL ENGINEER.

**SOUTH BAY SALT POND RESTORATION PROJECT**

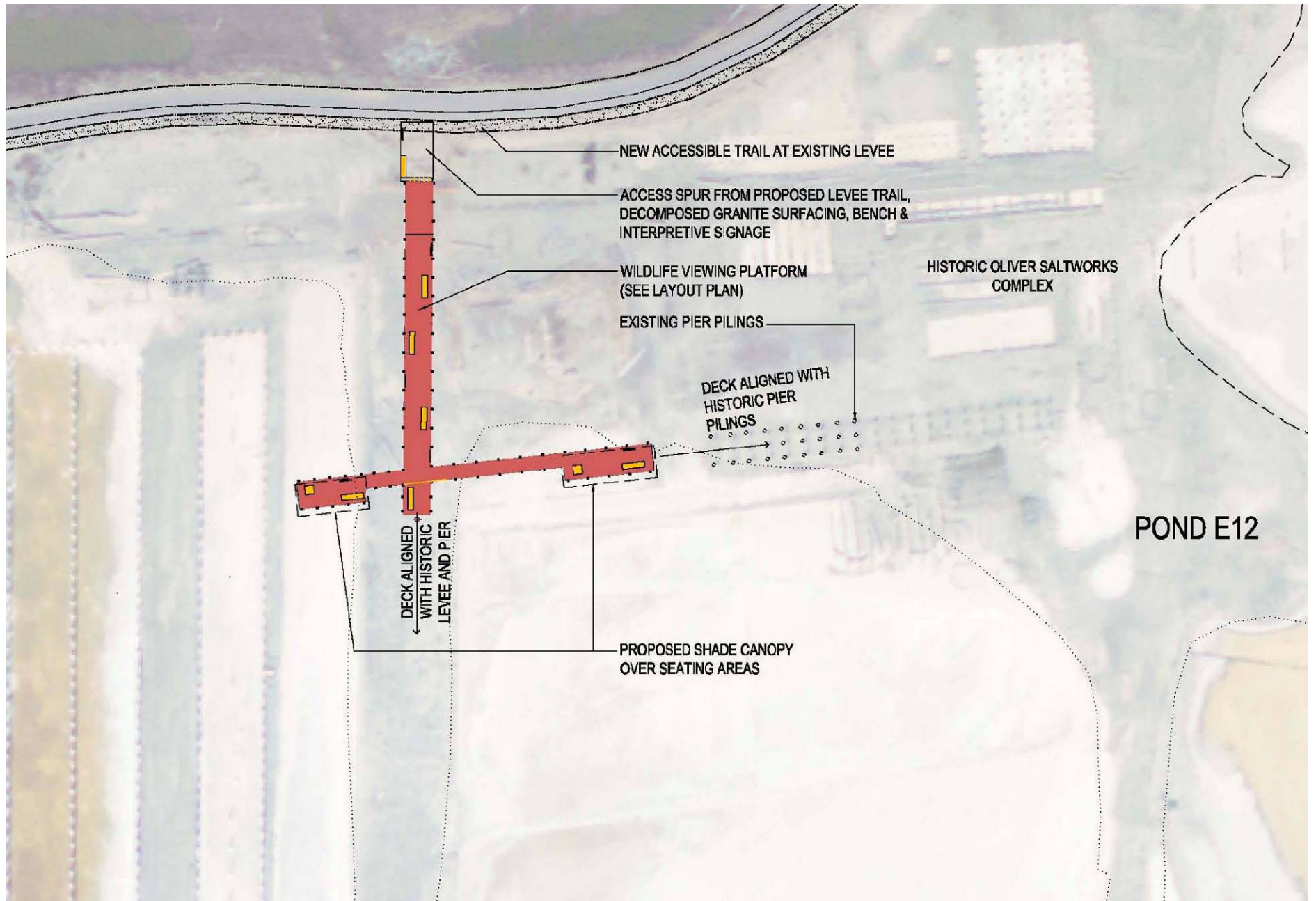
PREPARED BY: EDRAW INC.  
 DATE: 11.09.07  
 SCALE: 1"=8'-0"

FIGURE 4

**EDEN LANDING POND COMPLEX**

**KAYAK LAUNCH  
 DFG1 Layout Plan**





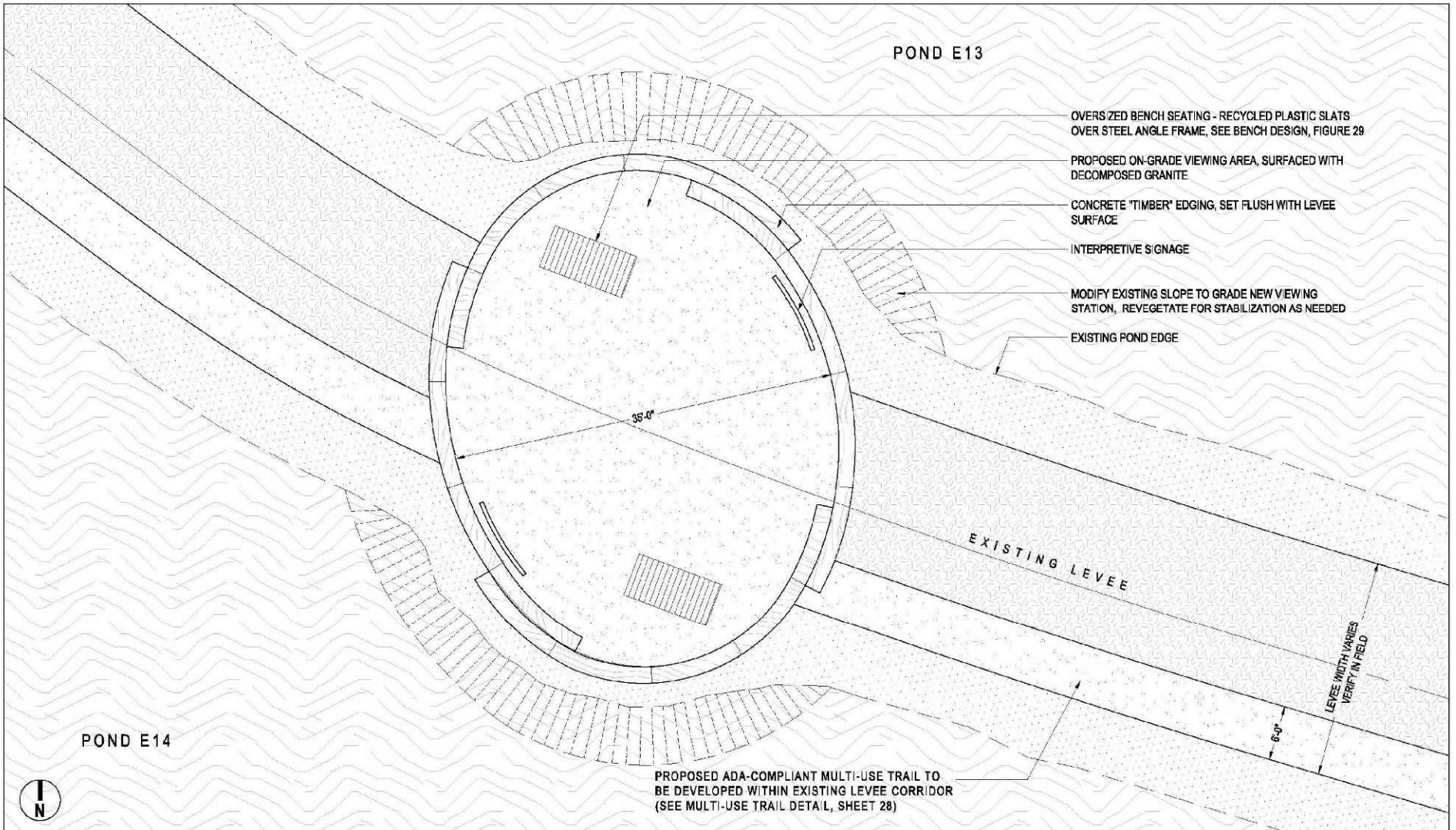
**DFG Site 2 – Salt Works Viewing Platform**





## DFG Site 3 – Archimedes Screw Viewing Area





POND E13

- OVERSIZED BENCH SEATING - RECYCLED PLASTIC SLATS OVER STEEL ANGLE FRAME, SEE BENCH DESIGN, FIGURE 29
- PROPOSED ON-GRADE VIEWING AREA, SURFACED WITH DECOMPOSED GRANITE
- CONCRETE 'TIMBER' EDGING, SET FLUSH WITH LEVEE SURFACE
- INTERPRETIVE SIGNAGE
- MODIFY EXISTING SLOPE TO GRADE NEW VIEWING STATION, REVEGETATE FOR STABILIZATION AS NEEDED
- EXISTING POND EDGE

35'-0"

EXISTING LEVEE

LEVEE WIDTH VARIES  
VERIFY IN FIELD

6'-0"

PROPOSED ADA-COMPLIANT MULTI-USE TRAIL TO BE DEVELOPED WITHIN EXISTING LEVEE CORRIDOR (SEE MULTI-USE TRAIL DETAIL, SHEET 28)

POND E14



**SOUTH BAY SALT POND RESTORATION PROJECT**

PREPARED BY: EDAW INC.  
DATE: 11.09.07  
SCALE: 1"= 8'-0"

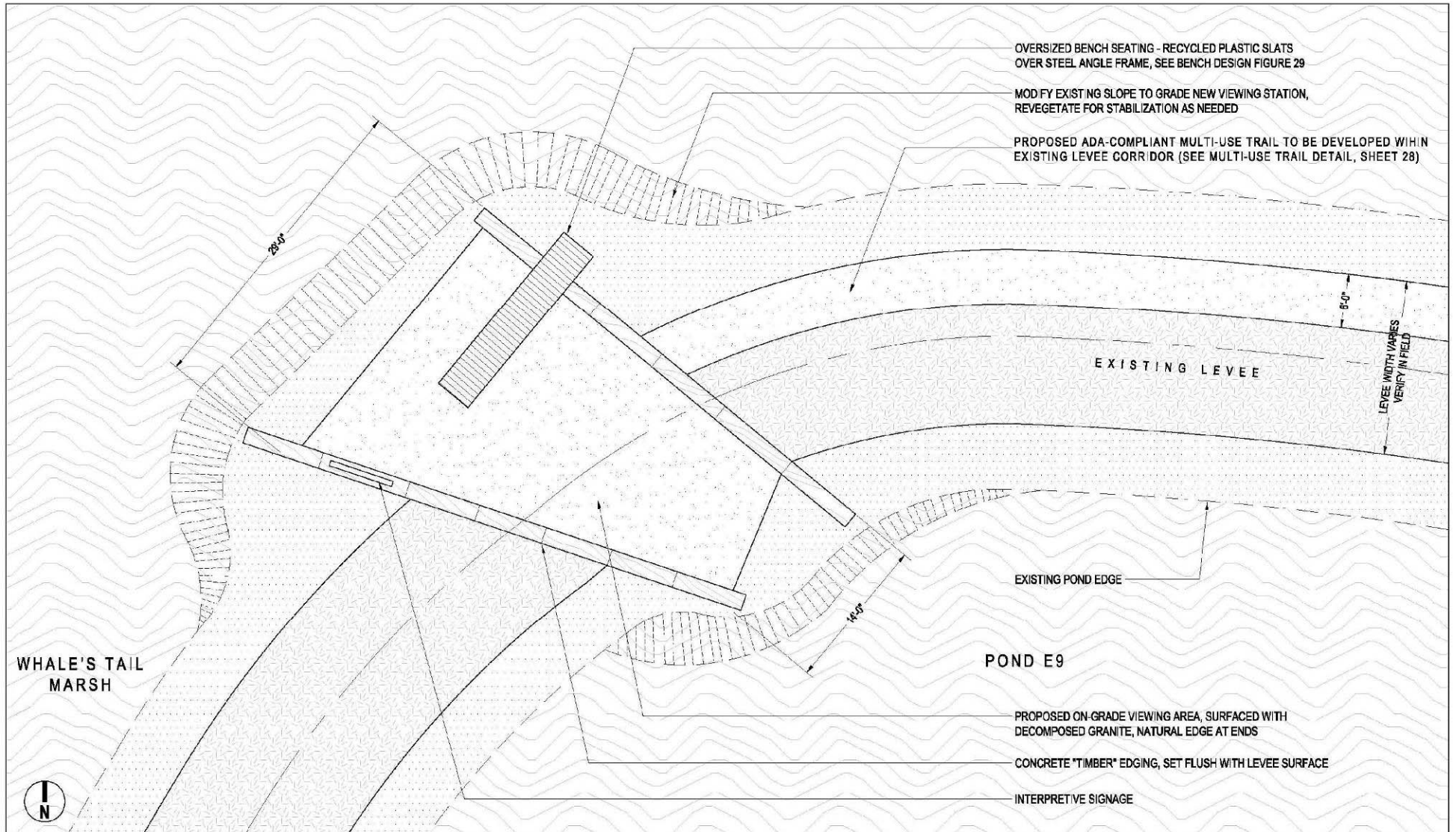
FIGURE 10

**EDEN LANDING POND COMPLEX  
ARCHIMEDES SCREW VIEWING AREA  
DFG3 Layout Plan**





## DFG Site 4 – Shoreline Viewing Area



**SOUTH BAY SALT POND RESTORATION PROJECT**

PREPARED BY: EDAW INC.  
 DATE: 11.09.07  
 SCALE: 1"=8'-0"

FIGURE 12

**EDEN LANDING POND COMPLEX  
 SHORELINE VIEWING AREA  
 DFG4 Layout Plan**